

1200

1200 Zoomspot

High performance ellipsoidal variable beam 1.0/1.2kw profiles. Two ranges of beam angles, Medium and Wide with interchangeable lens trays. Typically used in medium to large theatres, concert and entertainment venues for controlled illumination from auditorium and on-stage positions. The ellipsoidal optical system provides a high output beam with a centre peak, the light distribution can be adjusted between a flat (2:1) and peak (3:1+) field.

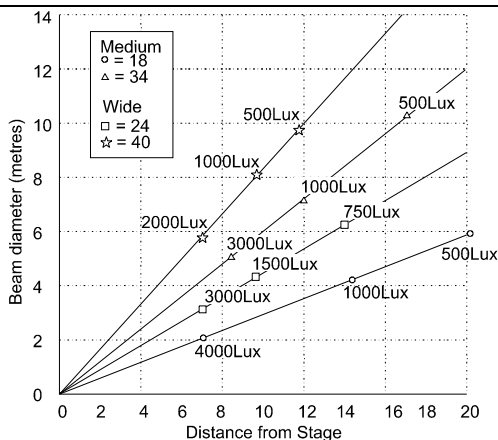
FEATURES

- Two models, Medium 18° - 34° and Wide 24° - 40° .
- Well controlled , ellipsoidal light beam.
- Interchangeable lens trays between Medium and Wide, extends flexibility of your inventory.
- Rotatable gobo holder, quickly and safely aligns pattern projections on stage.
- Limitless masking angles with two plane rotatable shutter system.
- Cranked yoke with adjustable yoke balance point.
- 'Swing-down' door for easy access to lamp or lens cleaning.
- Smooth 'posi-slide' focus system, no metal to metal contact.
- Fully tested and compliant to CE standards.

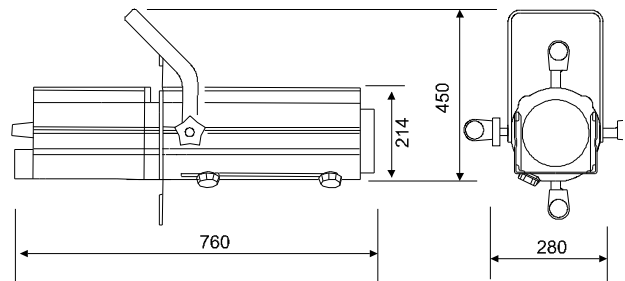
PHOTOMETRIC DATA

Tests conducted using a standard T29, 1200w, 240v, 27,600 lumens lamp.

Beam angles:	18° - 34°	24° - 40°
Medium Peak	205,000cd	160,000cd
Medium Flat	150,000cd	110,000cd
Wide Peak	147,000cd	95,000cd
Wide Flat	115,000cd	60,000cd



PHYSICAL DATA



Weight: 11.3 Kg
 Packed Weight: 13.6Kg
 Carton Size: 260 x 290 x 825
 Carton Size Cubic: 0.07

Colour Frame Size: 185mm x 185mm (DIN std).

Pattern (Gobo) size : A

Included: 4 X shutters, 1 x colour frame, 1 x M12 nut & bolt set, instruction sheet.

ORDER CODES & ACCESSORIES

ZS1200 Zoomspot 18° - 34°	10ZS1200M
ZS1200 Zoomspot 24° - 40°	10ZS1200W
1200 Iris	20IRIS
Rotatable Gobo Holder - A size	20GHR
Rotatable Gobo Holder - B size	20GHRB
ZS1200 18° - 34° Lens Tray	20LAM
ZS1200 24° - 40° Lens Tray	20LAW
Lens Safety Mesh	20SM6
Suspension Hookclamp	20HC
Safety Bond	20SC

Your Selecon Distributor