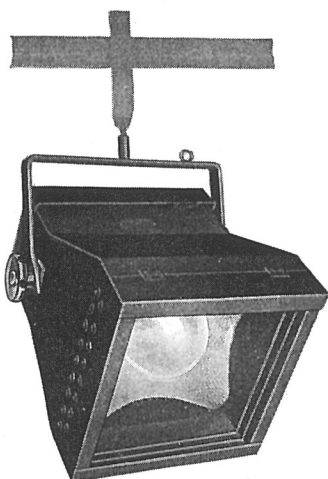


STRAND STAGE FLOODS



PATTERN 30 BATTEN FLOOD 500 Watt

This lantern gives a *medium angle* beam of light, suitable for illuminating objects situated some distance from it.

SPECIFICATION

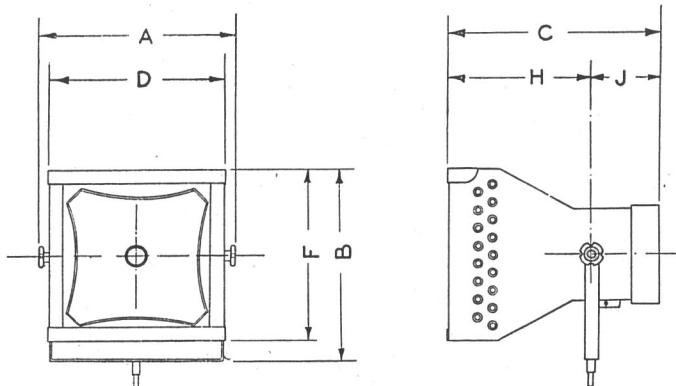
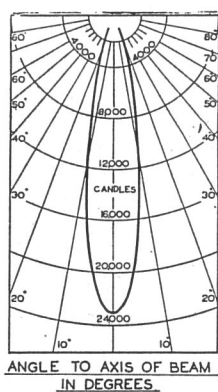
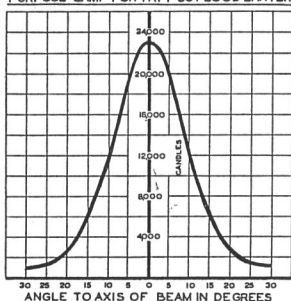
Lantern constructed in lead-coated steel, efficiently ventilated. Fitted with runners to take two millboard colour frames, hinged flap at top. One-piece Type 30 silvered glass "SUNRAY" reflector. Tilting fork and 3 in. diameter locking wheels. 10 amp. plug with earth connection and clip. Finish, black enamel outside, matt black inside.

PRICE (exclusive of Lamp) ... ~~£3-15-0~~
~~£3-3-0~~

£ s. d.

- B 60 Light Telescopic Stand (Min. height 4 ft. 3 in. Max. 7 ft.) ... ~~1-5-0~~
~~1-2-6~~ each
- B 61 Linen-bound millboard colour frames (11 3/4 in. x 11 3/4 in.) ~~10-0~~
~~0-9-0~~ per doz.
- B 62 Ditto, with assorted gelatines ... ~~0-15-0~~ "
- B 63 Ditto, with assorted "Chromoid" colours (see page 98) ... ~~1-14-0~~
~~2-5-0~~ "
- B 64 Safety chain with snap hook (for use when lantern is suspended) ... ~~0-2-0~~ each
- B 65 "L" clamp for 1 1/2 in. barrel ... ~~0-2-6~~ "

SUNRAY 10x10 REFLECTOR
 WITH 500W ANGLE BURNING GENERAL
 PURPOSE LAMP FOR PATT 30 FLOOD LANTERN



DIMENSIONS. PATTERN 30

	Ft.	In.		Ft.	In.
A ...	1	4	F ...	1	0 1/2
B ...	1	1	H ...	10	1/2
C ...	1	3	J ...	4	1/2
D ...	1	0 1/2			

Nett weight of Lantern, 15 lbs.

Telephone :
 Temple Bar 7464 (6 lines).

STRAND ELECTRIC
AND ENGINEERING CO., LTD.
FLORAL STREET, COVENT GARDEN, W.C.2

Telegraphic Address :
 Spotlight, Rand, London.