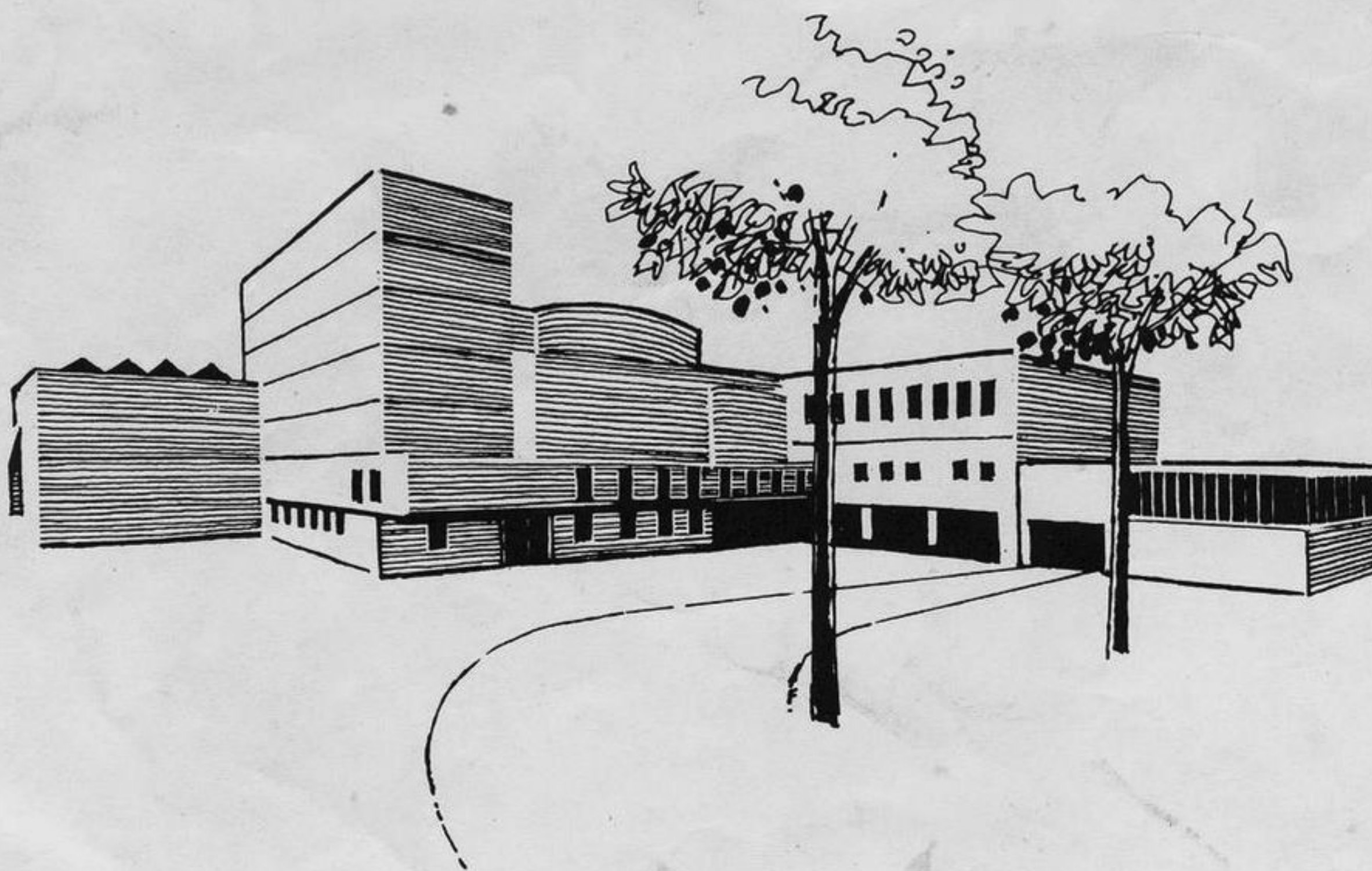


# DERBY PLAYHOUSE



DERBY PLAYHOUSE LTD. is a Registered Friendly Society and operates as a subsidised regional repertory theatre, receiving financial support from the Arts Council of Great Britain, Derby City Council, Derbyshire County Council and East Midlands Arts. There are in fact two auditoria; the Main House, seating 535, and the Studio, seating up to 100.

The Playhouse presents an annual repertory season with a resident professional company, offering a wide variety of productions, interspersed from time to time with productions by local amateur operatic societies, with special daytime shows for children and regular visits by Northern Ballet Theatre. In addition there is a varied Sunday Concert programme throughout the year.

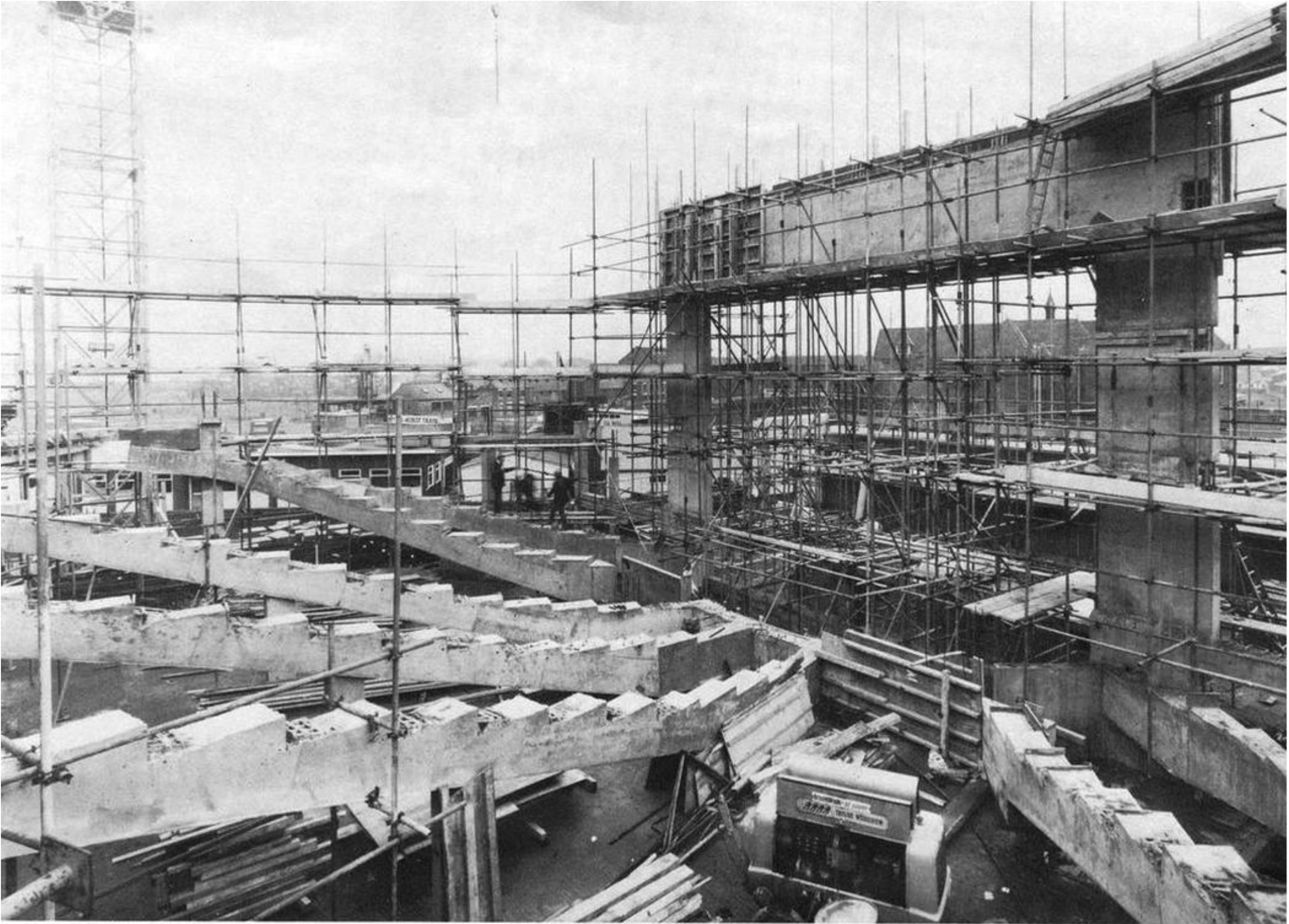
Until 1979 the Playhouse was a Regional Film Theatre, screening films one week out of every four together with a four-week summer Film Festival. Since it was decided to cease screening, there have been more weeks of live theatre, and the theatre only closes for annual maintenance.

In addition to the Main House Company, there is also a year-round Studio Company performing in the Studio itself, in schools and in community centres, presenting largely new work, often specially written for the company.

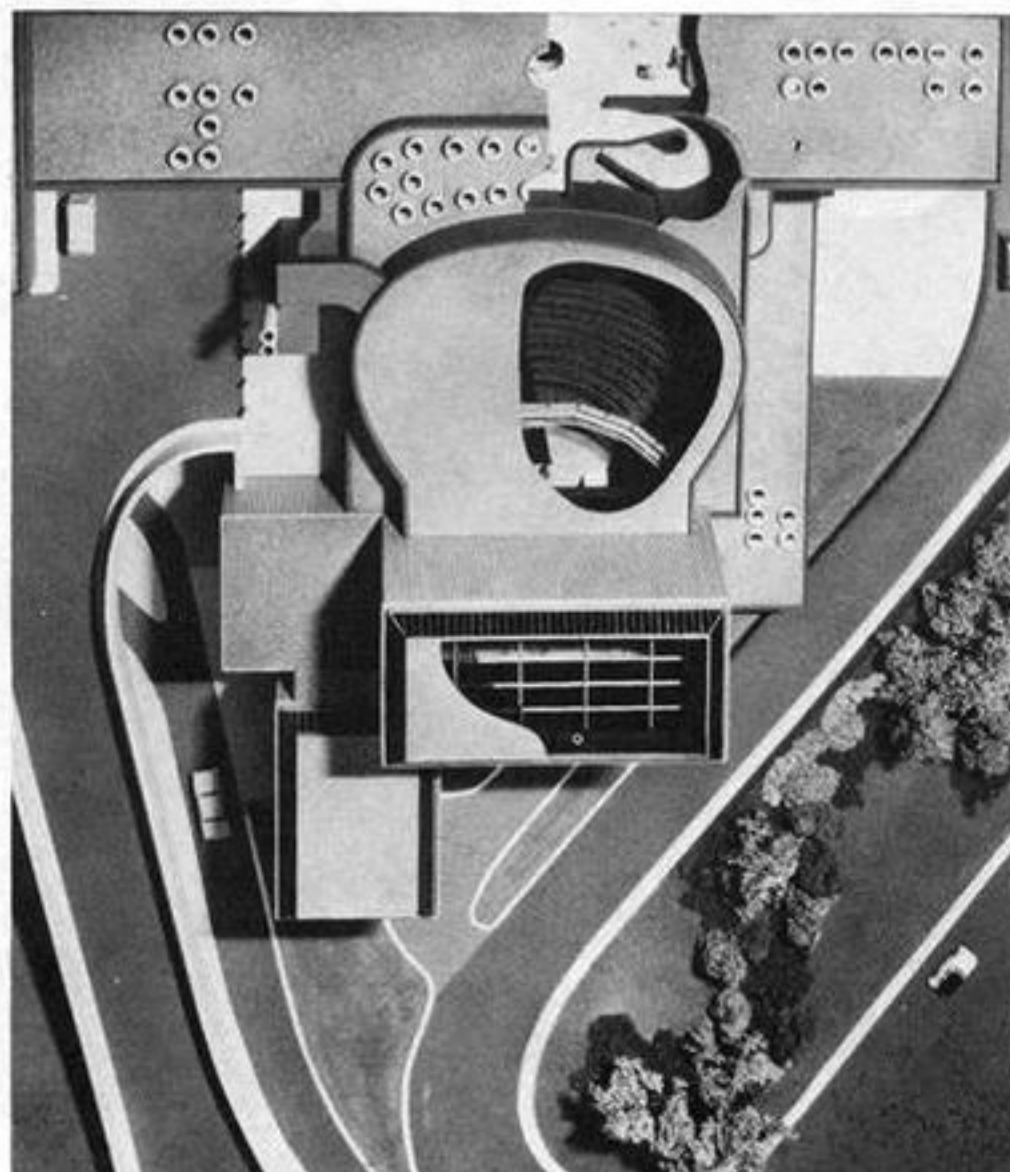
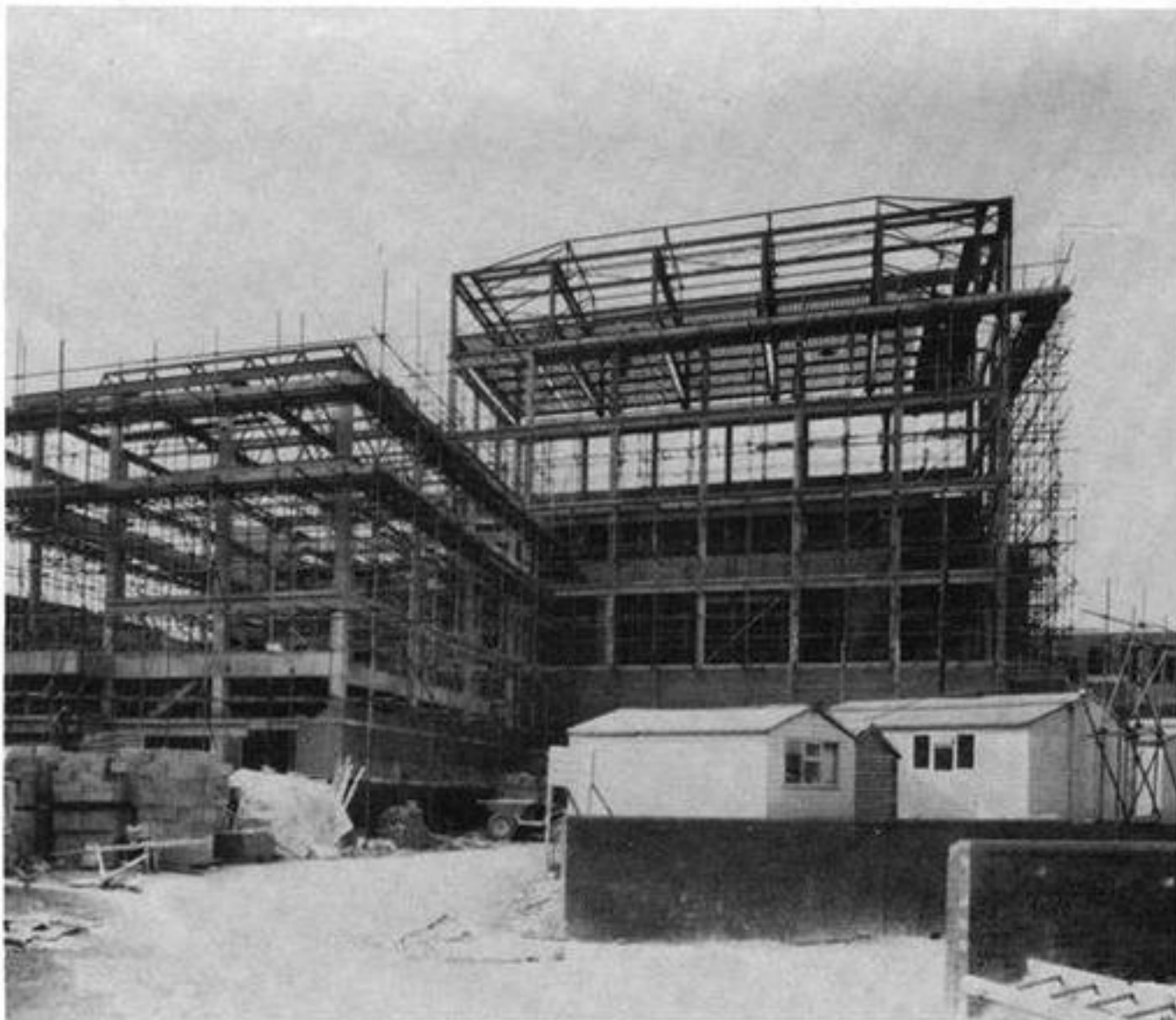
There has been a repertory theatre in Derby since 1948, when the Wilkins' Memorial Hall in Becket Street was converted into a club theatre, performing weekly 'rep' twice nightly. The 'Little Theatre' moved to converted school premises in Sacheverel Street in 1952 to become an all-professional public theatre, and, surviving a fire in 1956, continued there until the threat of demolition as part of a clearance programme prompted the company to seek new premises. The new Playhouse, designed by Roderick Ham and Partners, and situated in the Eagle Centre shopping and market complex, was opened by the Duke of Devonshire on September 20th, 1975.

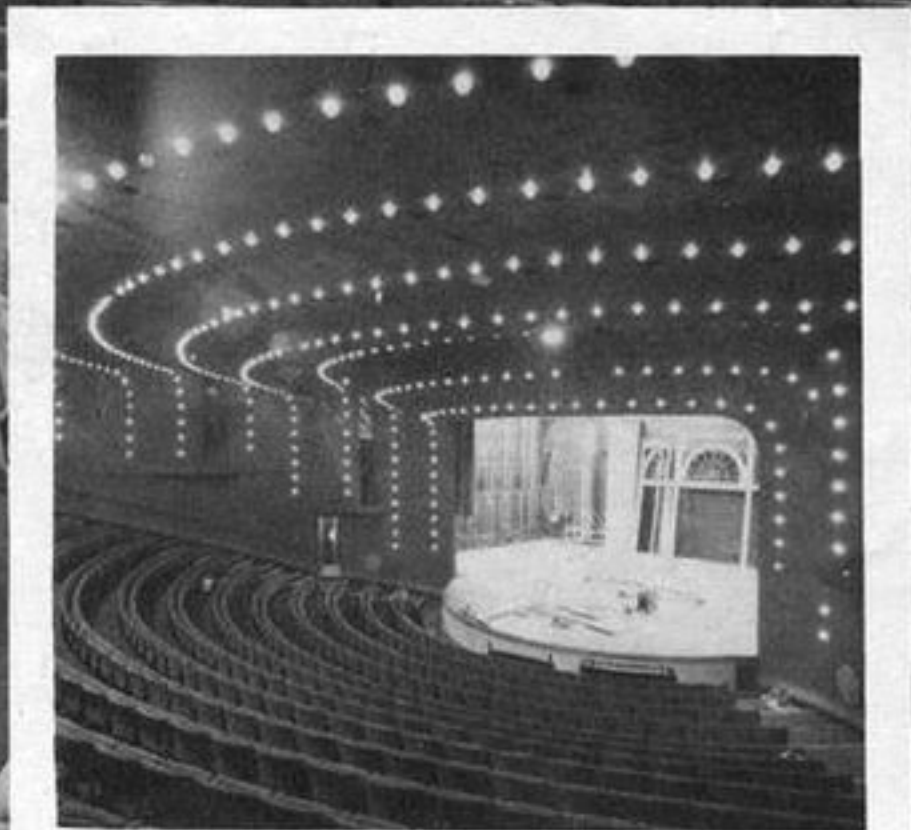
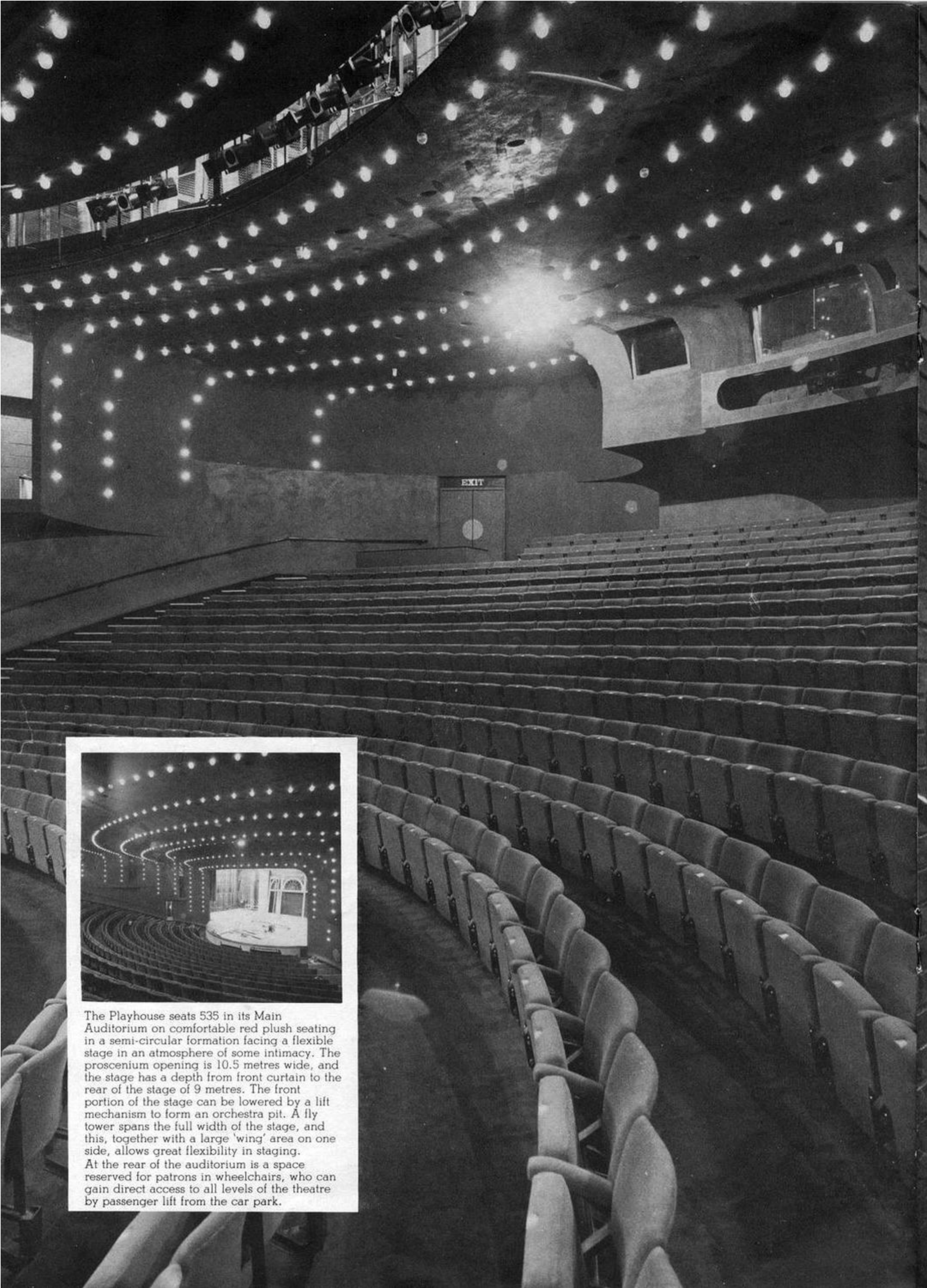
The Playhouse is well situated, being integrated with the Eagle Centre market area, attracting passing shoppers with its bright lights and inviting foyers, while its position at one end of the complex gives it prominence and the status of a landmark with its 'eagle' motif on the fly tower dominating the junction of Traffic Street with the Cock Pitt island. The theatre is directly adjacent to the Inner Ring Road and Bus Station, and is only a short distance from the Railway Station, and is therefore easily accessible; its position directly above the Eagle Centre Car Park ensures adequate parking facilities, with direct access via lift and stairs to the Playhouse foyers.



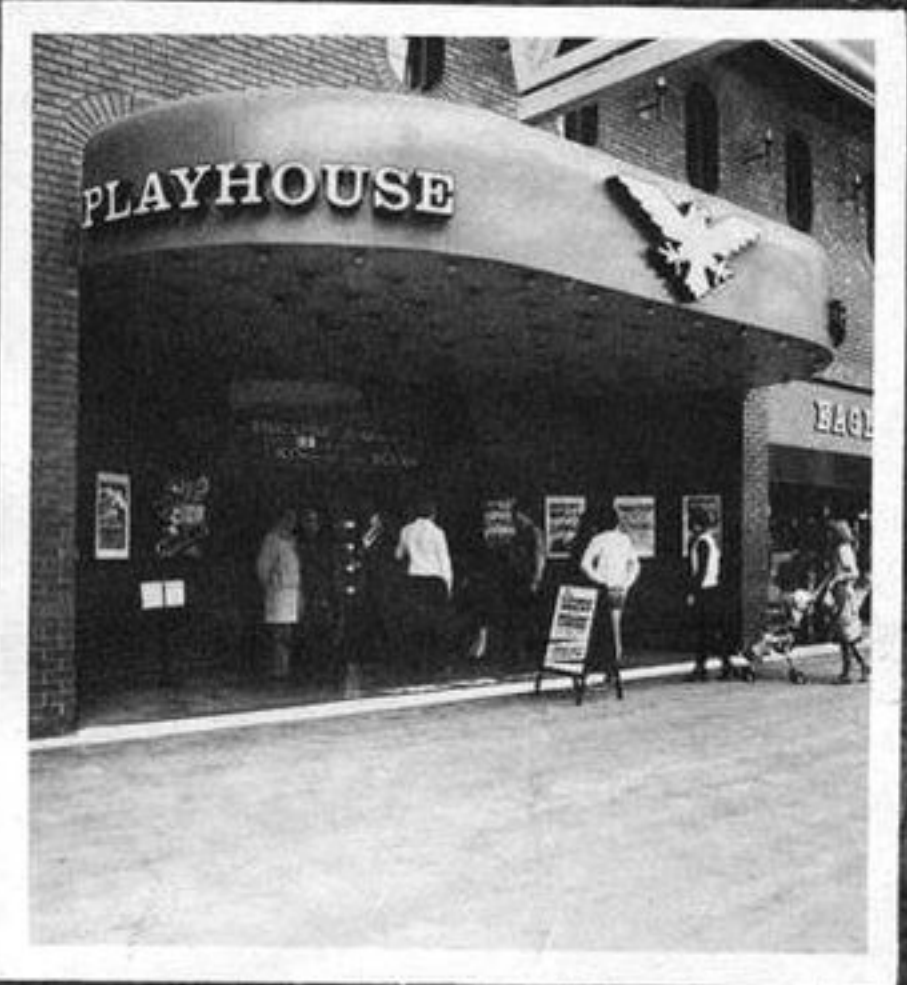
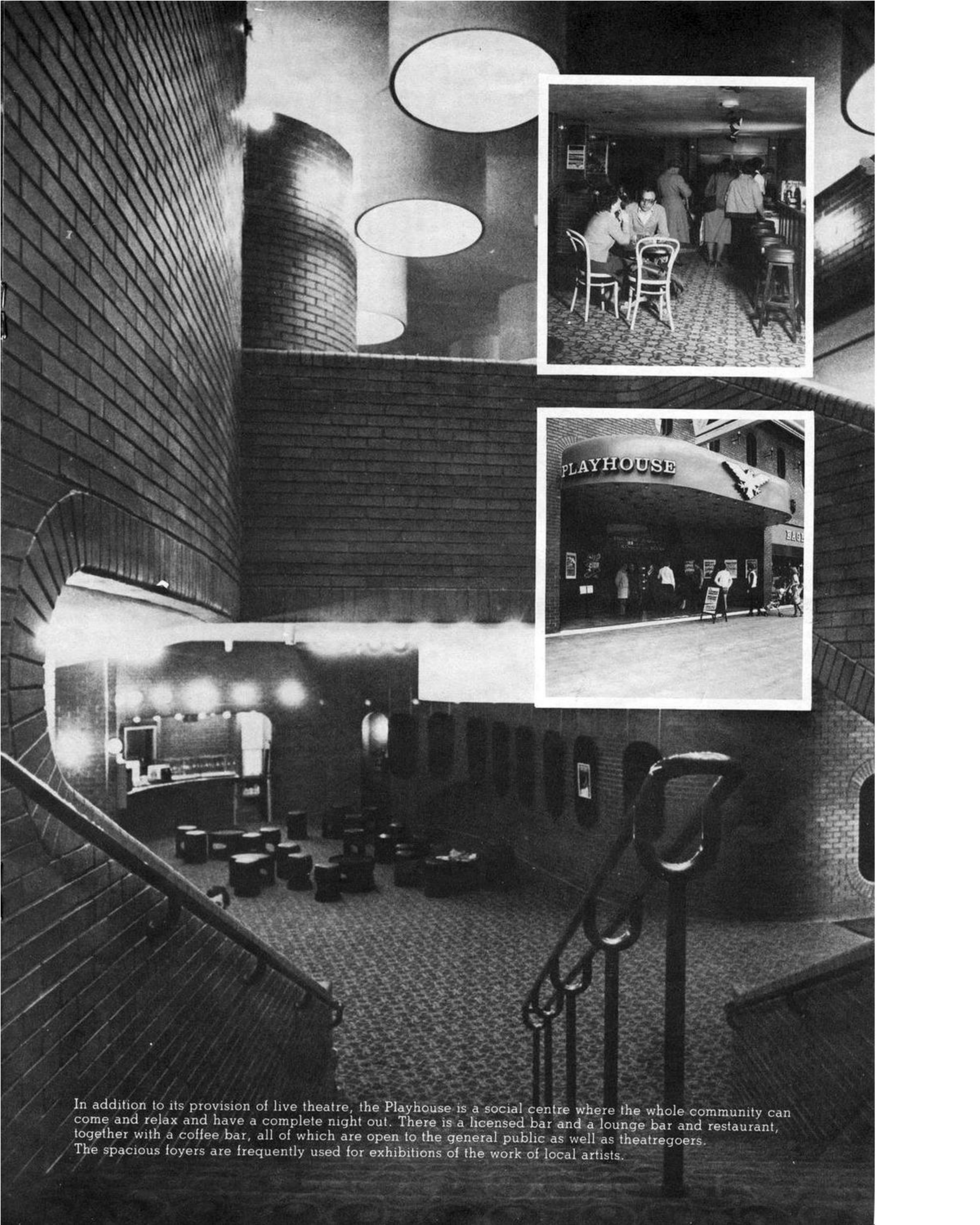


The Playhouse is constructed with a re-inforced concrete frame with attractive dark brick cladding, three storeys high, containing in addition to the Main Auditorium and Studio, spacious foyers for public circulation, office and dressing room accommodation and all the workshops necessary to produce live theatre. The final cost of the building, furnishings and machinery amounted to £812,439. The building is held by Derby Playhouse Ltd. for a term of 99 years commencing 7th July 1975 (with an option to renew for a further term of 26 years) under a lease from the Derby City Council.





The Playhouse seats 535 in its Main Auditorium on comfortable red plush seating in a semi-circular formation facing a flexible stage in an atmosphere of some intimacy. The proscenium opening is 10.5 metres wide, and the stage has a depth from front curtain to the rear of the stage of 9 metres. The front portion of the stage can be lowered by a lift mechanism to form an orchestra pit. A fly tower spans the full width of the stage, and this, together with a large 'wing' area on one side, allows great flexibility in staging. At the rear of the auditorium is a space reserved for patrons in wheelchairs, who can gain direct access to all levels of the theatre by passenger lift from the car park.



In addition to its provision of live theatre, the Playhouse is a social centre where the whole community can come and relax and have a complete night out. There is a licensed bar and a lounge bar and restaurant, together with a coffee bar, all of which are open to the general public as well as theatregoers. The spacious foyers are frequently used for exhibitions of the work of local artists.

## MAIN THEATRE PRODUCTIONS SINCE 1975

### 1975/76 Season

MY FAIR LADY \* HAMLET \* LLOYD GEORGE KNEW MY FATHER \* SLEEPING BEAUTY \* ROSENCRANTZ AND GUILDENSTERN ARE DEAD \* A VIEW FROM THE BRIDGE \* COWARDY CUSTARD \* AN IDEAL HUSBAND \* THE SEAGULL \* AN ENGLISHMAN AMUSED

### 1976/77 Season

THE NORMAN CONQUESTS \* THE MISER \* ENTER SHERLOCK HOLMES \* JACK AND THE BEANSTALK \* SLEUTH \* MACBETH \* A TASTE OF HONEY \* THE IMPORTANCE OF BEING EARNEST \* A MAN FOR ALL SEASONS

### 1977/78 Season

ABSURD PERSON SINGULAR \* JOSEPH AND THE AMAZING TECHNICOLOR DREAMCOAT \* EQUUS \* MOTHER GOOSE \* ROMEO AND JULIET \* PRIVATE LIVES \* IRMA LA DOUCE \* HEDDA GABLER \* WITNESS FOR THE PROSECUTION

### 1978/79 Season

DIAL 'M' FOR MURDER (tour) \* MRS. WARREN'S PROFESSION \* GODSPELL (tour) \* JOURNEY'S END \* DICK WHITTINGTON \* WHAT THE BUTLER SAW \* MURDERER \* BEDROOM FARCE \* DONKEY'S YEARS \* IN PRAISE OF LOVE

### 1979/80 Season

OTHERWISE ENGAGED \* TEN TIMES TABLE \* KING LEAR \* PRIVATES ON PARADE \* GODSPELL (tour) \* ALADDIN \* AN INSPECTOR CALLS \* COUNT DRACULA \* LOOT \* BLITHE SPIRIT \* THE SCHOOL FOR SCANDAL \* WHOSE LIFE IS IT ANYWAY? \* MURDER WITH LOVE \* A MURDER IS ANNOUNCED (tour)

## STUDIO PRODUCTIONS SINCE 1975

### 1975/76 Season

DRUMS IN THE NIGHT \* THE FINEST FAMILY IN THE LAND \* AMLETH \* THE STRICTLY ADULT PANTO SHOW \* PANTAGLEIZE \* HITTING TOWN \* THREE WOMEN \* OSCAR \* THE TINDER BOX \* THE PROMISE

### 1976/77 Season

DOUBLE, DOUBLE \* SHE WAS STANDING BY THE JUKE BOX \* THE EXCEPTION AND THE RULE \* HOME \* THE BIG RED ROCK-EATER SHOW \* THE PEAR TREE CONSPIRACY (World Premiere) \* THE GLASS MENAGERIE \* GHOSTS \* TIME-SNEEZE \* THE QUEEN AND THE REBELS

### 1977/78 Season

THE SHREW \* CLOGS \* HARLEQUIN \* WAITING FOR GODOT \* PLAY AND FOOTFALLS \* MACRONE'S GUEVARA \* ADVENTURE IN THE DEEP \* KENNEDY'S CHILDREN

### 1978/79 Season

TIME AND TIME AGAIN \* SPOILED \* REEL ALE \* LOOK BACK IN ANGER \* EVENTS IN AN UPPER ROOM \* A LILY IN LITTLE INDIA \* THE CARETAKER

### 1979/80 Season

THE DAUGHTER IN LAW \* WE CAN'T PAY? WE WON'T PAY! \* A NIGHT AT THE CLOTH CAP AND WHIPPET \* IT'S A SCREAM (World Premiere) \* DEVIL'S ISLAND \* WOMEN AT WAR (World Premiere)

### DERBY PLAYHOUSE has also played host to the following visiting companies:

NORTHERN BALLET THEATRE; TRIPLE ACTION THEATRE; FOCO NOVO; GAY SWEATSHOP; SHARED EXPERIENCE; BRITISH THEATRE OF THE DEAF; PAINES PLOUGH; HULL TRUCK; MICHAEL BURRELL; INCUBUS (Professional)

DERBY NEW OPERA COMPANY; ROLLS-ROYCE AMATEUR OPERATIC SOCIETY; DERBY OPERA COMPANY; THE GOOD COMPANIONS STAGE SOCIETY; SPONDON MUSICAL SOCIETY; THE MARLOWE PLAYERS; REPTON SCHOOL; DERBY THEATRE IN THE ROUND; THE WATSON PLAYERS; IVANHOE THEATRE GROUP; CLARENDON COLLEGE, NOTTINGHAM; CHELLASTON PLAYERS (Amateur)

And many Sunday concerts

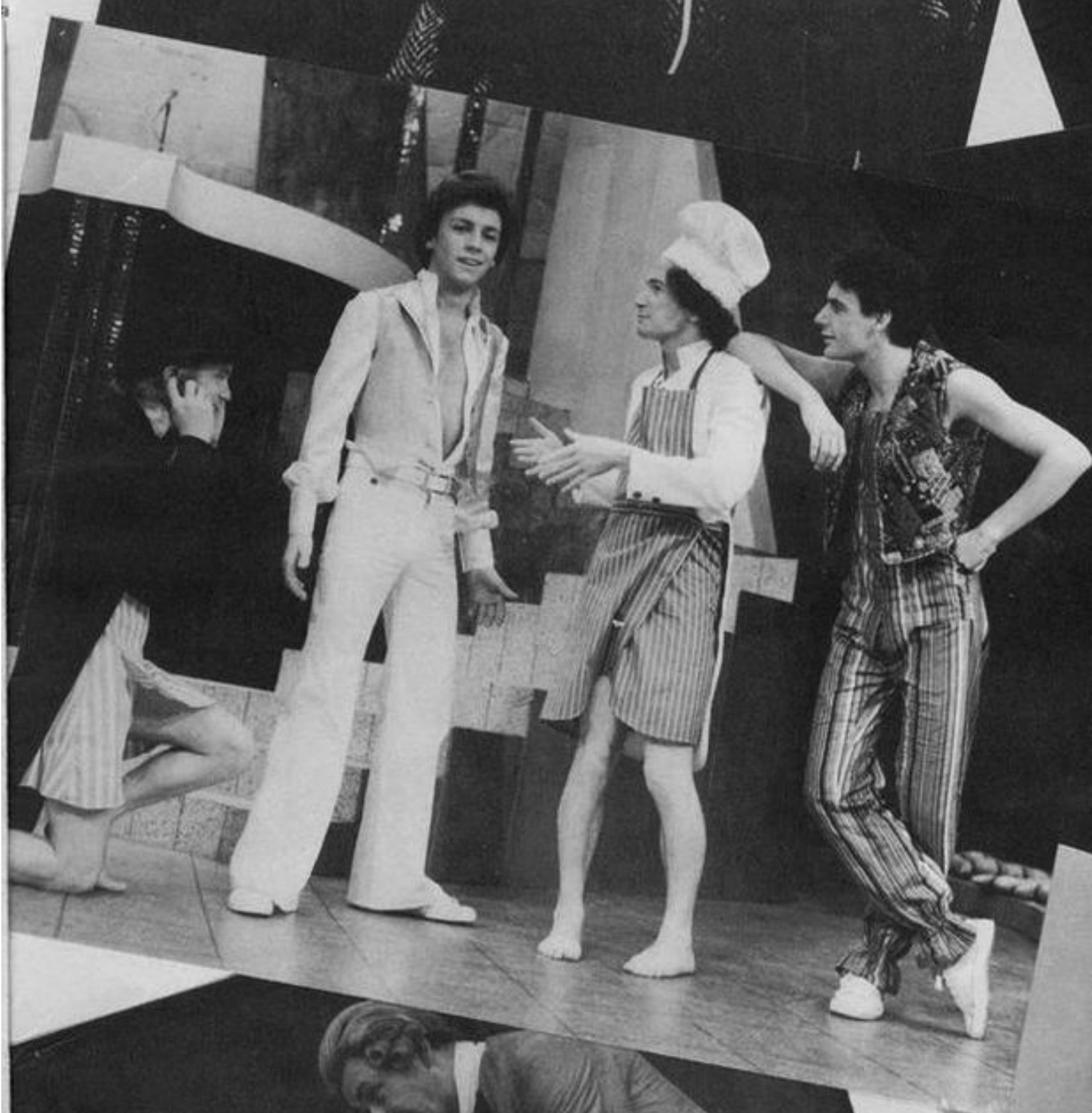
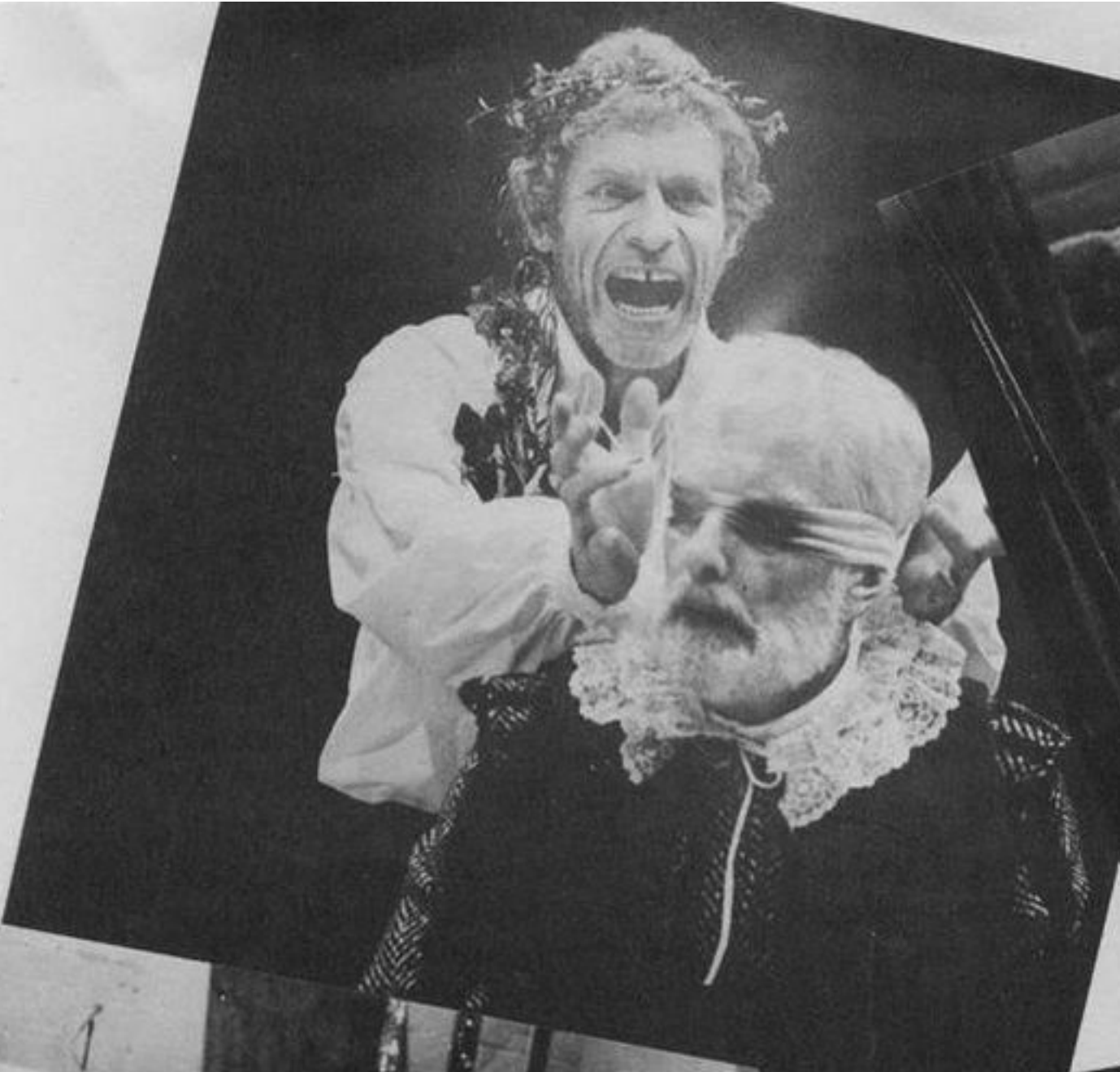
**ATTENDANCE AT ALL PLAYHOUSE ACTIVITIES INCREASED FROM 60,112 IN THE LAST YEAR AT THE OLD THEATRE TO 128,162 IN THE FIFTH YEAR IN THE NEW THEATRE — AN INCREASE OF 113%**

Major D. V. W. MALIN T.D., J.P., was Chairman of the Board of Directors until 1977; he was succeeded by TONY P. WILLARD-BURROWS.

MARK WOOLGAR was Resident Director until the end of the 1979/80 Season; he was succeeded by CHRISTOPHER HONER as Artistic Director.

JOHN WILLIAMS was Managing Director until the end of the 1977/78 Season; he was succeeded by DAVID EDWARDS as Administrative Director.

JEFF TEARE, JOHN NORTH and DAVID MILNE have been successive Directors of the Studio Theatre.



# DERBY PLAYHOUSE

ARCHITECT Roderick Ham and Partners

CONSULTANTS Mechanical, Electrical & Structural — Edwards & Blackie. Quantity Surveyors — Sir William Baird & Partners (London). Stage Equipment, Lighting & Sound — Theatre Projects Consultants.

## AUDITORIUM

- 1 No. of Seats — 546, single rake of 15 rows
- 2 Accommodation for 3 No, wheelchairs
- 3 Distance between rows — 900mm
- 4 Seat width — 508mm
- 5 Risers: 300mm (first 4 rows: 150mm)
- 6 Distance of end front row seat to Centre line at edge of stage: 54m
- 7 Distance at end front row seat from edge of stage 2.2m
- 8 Maximum auditorium width — 23.700m
- 9 Maximum auditorium depth — 17.850m
- 10 Seat furthest from stage — 17.500m and 2.85m above stage level
- 11 Position of safety curtain — 750mm upstage of orchestra elevator

## STAGE

- 1 Dimensions of main stage;  
Width — 30m  
Depth — 10m  
Wing space left — 14.68m  
Wing space right — 4.92m
- 2 Stage Riser — 750mm
- 3 Proscenium opening:  
Width — 10.4m  
Height — 5.65m to underside of lighting bridge
- 4 Height of Grid — 15.250m
- 5 Stage to top flying dead — 14.25m
- 6 Stage to sub-stage — 4.4m
- 7 Forestage elevator (curved front edge)  
Length — 10m  
Width — 2.700m  
Traps — 2 No — 500 x 500
- 8 No of line sets — Total 35  
Counterweight — 20 No x 4 line  
Hemp — 12 No x 4 line, 2 No x 3 line  
200mm centres
- 9 Scenery Lift  
Width — 2.219m  
Depth — 2.801m
- 10 Workshop to Stage  
Width — 2.800m  
Height — 2m
- 11 Get In  
Width — 2m  
Height — 7.500m

DRESSING ROOMS: 6 (Accomm. 24)

## SOUND AND COMMUNICATIONS

- 1 Mixer: Custom built
- 2 No. of input channels — 18 into 4
- 3 No. of groups — 4
- 4 No. of speaker circuits — 6
- 5 No. of tape decks — 2 x Revox A77
- 6 No. of gram decks — 1
- 7 No. of power amplifiers — 2 x 100w
- 8 No. of microphones — 6 x AKG D190E; 2 x AKG D202E
- 9 No. of speakers — One fixed proscenium system (mono); 2 x Altec 1208B, Portable; 2 x Goodman 15AX, Portable

## LIGHTING

- 1 Type of control — Thorn series GM, Type 3GM/100
- 2 No. of dimmers — 90
- 3 No. of outlets — 100
- 4 No. of pre-sets — 3
- 5 Lanterns:  
35 x silhouette 30  
5 x silhouette 15  
22 x CCT 1kw Fresnel  
1 x CCT 2kw Fresnel  
4 x Patt 243  
2 x Patt 223  
10 x Patt T84  
10 x Par Blazers  
9 x 1kw CCT AC 10041  
9 x Patt 750  
6 x S63F Battens
- 6 3 Auditorium Bridges, 4 side slots  
6 int. wired 7 ways x 4m bars

## STUDIO THEATRE

- 1 No. of seats — 70-100
- 2 Form of seating — flexible rostra units
- 3 Dimensions: Width — 10.6m; Length — 9.9m; Height — 3.9m
- 4 Height of grid — 2" OD barrel at 3.8m
- 5 Get-In: Width — 3m; Height — 3.8m
- 6 Sound and Communications — Uher Stereo Mixer 500; Eagle PRO A65 Amplifier; 3 x Goodwin speakers. Tape decks: 1 Revox A77; 1 Sony Cassette Deck
- 7 Lighting Equipment: Rank Strand 18-way Mini — 2 Desk

Independent access from Car Park with own foyer and licensed bar.