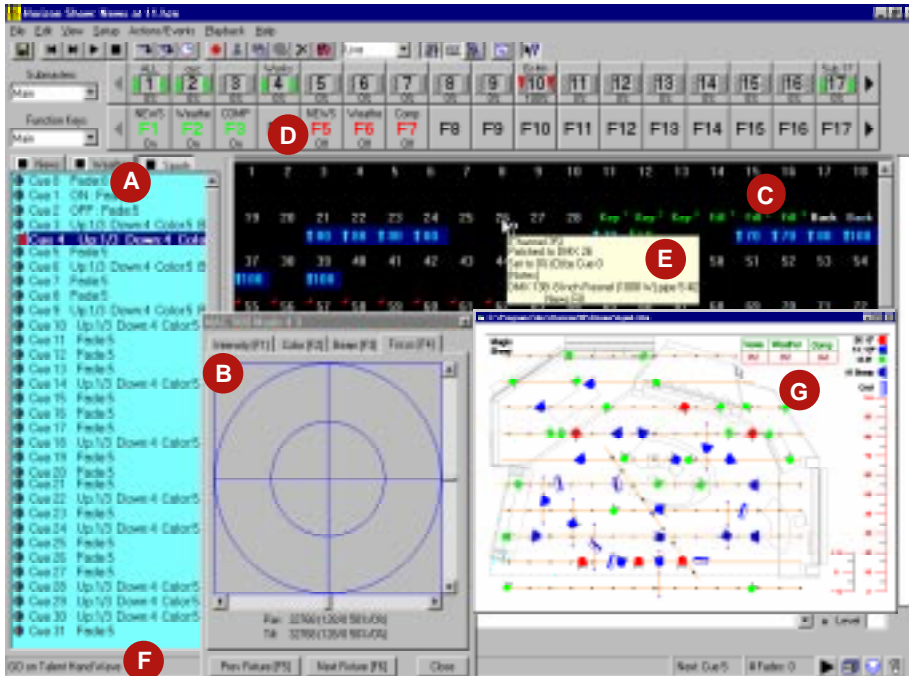




# Key Features



- A Multiple Cue Lists.
- B Graphic control of automated lighting
- C Ability to name channel fields
- D User-programmable Function Keys
- E "What's This?" feature
- F Screen display of status and reminders
- G Active Magic Sheets™

## HORIZON '98

HORIZON '98 is software that converts a Pentium® class personal computer into the most powerful lighting control system available. This version adds many exciting features to the HORIZON™ repertoire, including Windows '98 support, multiple cue lists allowing simultaneous playback of three different sequences of cues, support for a hand held focus remote, support for multiple DMX interfaces to increase dimmer counts, enhanced group functions, and more.

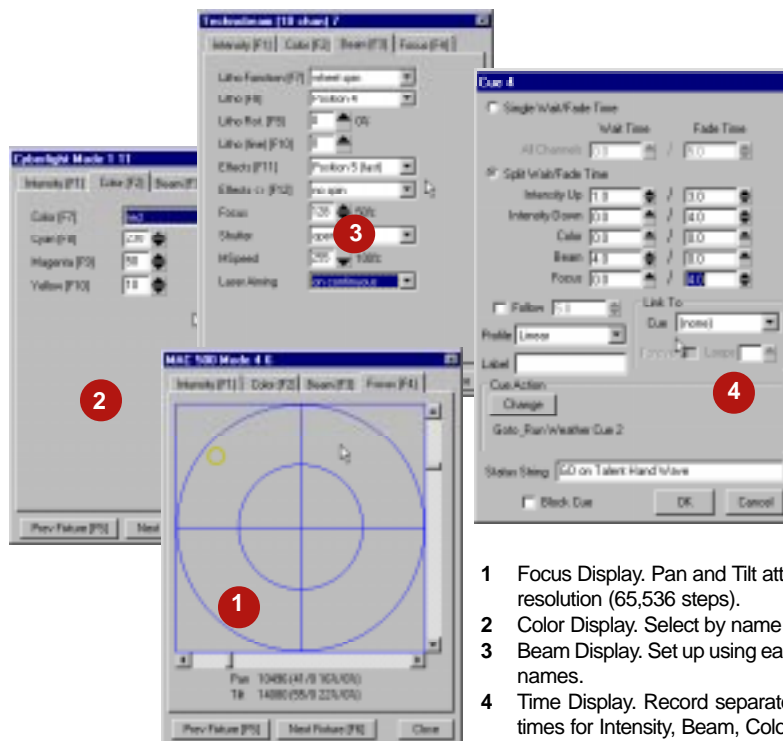
As always, this version of HORIZON™ is available free of charge on CD-ROM or via the Internet. A program of free upgrades eliminates the obsolescence common to most consoles.

## HORIZON '98 Silver

This added-value version of HORIZON '98 includes a host of new professional level features. Active Magic Sheets™ allow you to pick fixtures, levels, and cues from a graphic display. An unlimited number of Cue Lists let you play back multiple cues on stage at the same time, or even run lights in multiple venues from one console. Scheduled events run cues at specific times. A "What's This?" function displays channel, load & focus data imported from popular lighting management programs, putting detailed system information at your fingertips.

## HORIZON '98 Gold

This premium version of HORIZON '98 adds sophisticated moving light control to the impressive feature set of HORIZON '98 Silver. Over thirty fixture types are currently supported, with new ones continually added to the library. New fixture definitions are available for free download from the Internet. HORIZON '98 Gold is undoubtedly the most powerful lighting control product available today.



- 1 Focus Display. Pan and Tilt attributes are high resolution (65,536 steps).
- 2 Color Display. Select by name or by mix.
- 3 Beam Display. Set up using easy to remember names.
- 4 Time Display. Record separate wait and fade times for Intensity, Beam, Color and Focus.

## Horizon Products

### HORIZON 512 Channel DMX Interface

The basic HORIZON Interface Module. This unit plugs into the parallel (printer) port on the host PC. The unit outputs one universe of DMX (512 channels).

### HORIZON Submaster Wing Panel

The HORIZON Submaster Wing Panel option provides improved "hands on" control. 24 submasters and bump buttons are provided. The number of submaster pages is unlimited.

### HORIZON 1024 Ethernet Node

This new output option for the HORIZON product family not only boosts the output capacity of the system, it also adds ethernet connectivity. This means that your system layout is no longer constrained by the wiring limitations imposed by DMX512. Standard Cat-5 cable connects your equipment together, adding flexibility at a low cost. The 1024 Ethernet Node also adds contact closure events and optional SMPTE/MIDI capability to any of the HORIZON software versions described above.

### HORIZON Playback Controller

This self-contained unit has everything needed for unattended playback of lighting cues. It includes all the playback features of HORIZON '98 Silver, accepts contact closure inputs and optional SMPTE/MIDI control, and drives up to 1024 DMX devices. Front panel status display and 12 function keys keep you in control. The Playback Controller can run in the stand-alone mode or can be attached to any TCP/IP network, allowing it to be monitored, synchronized and controlled from a central location. The Playback Controller is a web server and can serve up Active Magic Sheets™ to any computer on the network.

### HORIZON Remote Focus Unit

A hand held keyboard & LCD display make focusing from the floor a snap. Select dimmers or channels and set them to a level.

## Features

	Standard	Silver	Gold
Active Magic Sheet™		YES	YES
Astronomical Clock		YES	YES
Channel Check		YES	YES
Channel Title		YES	YES
Delete Cue Only	YES	YES	YES
Dimmer Notes	YES	YES	YES
Dynamic Profile		YES	YES
Flash Channel/Dimmer	YES	YES	YES
Function Bars	1	Unlimited	Unlimited
Groups from Keyboard	YES	YES	YES
Groups at Level	YES	YES	YES
Hand Held Remote	YES	YES	YES
Import Patch/Data	YES	YES	YES
IPS Remote Commands	YES	YES	YES
Moving Light Support			YES
Multiple Cue List	3	Unlimited	Unlimited
Windows 95/98 Support	YES	YES	YES
Power Patch		YES	YES
Two DMX 512 Interface Modules	YES	YES	YES
Start Up Events	YES	YES	YES
Status String	YES	YES	YES
Time of Day Events		YES	YES
"What's This?" function		YES	YES

## Product Checklist

IPS-HZ-512	HORIZON 512 Channel DMX Interface Module
IPS-HZ-1024	HORIZON 1024 Ethernet Node
IPS-HZ-SWP	HORIZON Submaster Wing Panel
IPS-HZ-SILVER	HORIZON Silver Software Upgrade
IPS-HZ-GOLD	HORIZON Gold Software Upgrade
IPS-HZ-PBC	HORIZON Playback Controller
IPS-HZ-MIDI	HORIZON Playback SMPTE/MIDI Option
IPS-HZ-RFU	HORIZON Remote Focus Unit



Home Office: 2181 NW Front St. • Portland, OR 97209 • USA • (800) 223-9477 • (503) 222-9944 • Fax (503) 227-1562  
 Canada: 1241 Dension St. #44 • Markham, Ontario L3R 4B4 • Canada • (888) ROSCO TO • (905) 475-1400 • Fax (905) 475-3351  
 South America: Rua Antonio De Barros, 827 • São Paulo SP • Brasil CEP 03401-000 • (011) 218-2865 • Fax (011) 218-0193  
 Europe: Blanchard Works • Kangley Bridge Road • Sydenham, London SE26 5AQ • England • (181) 659-2300 • Fax (181) 659-3153  
 Australia: 42 Sawyer Lane • Artarmon 2064 New South Wales • Australia • (02) 9906-6262 • Fax (02) 9906-3430  
 Home Page: www.rosco-et.com • Email: sales@rosco-et.com  
 Copyright 1998. Specifications subject to change. Revised 5/99. (Y08-2023-A)