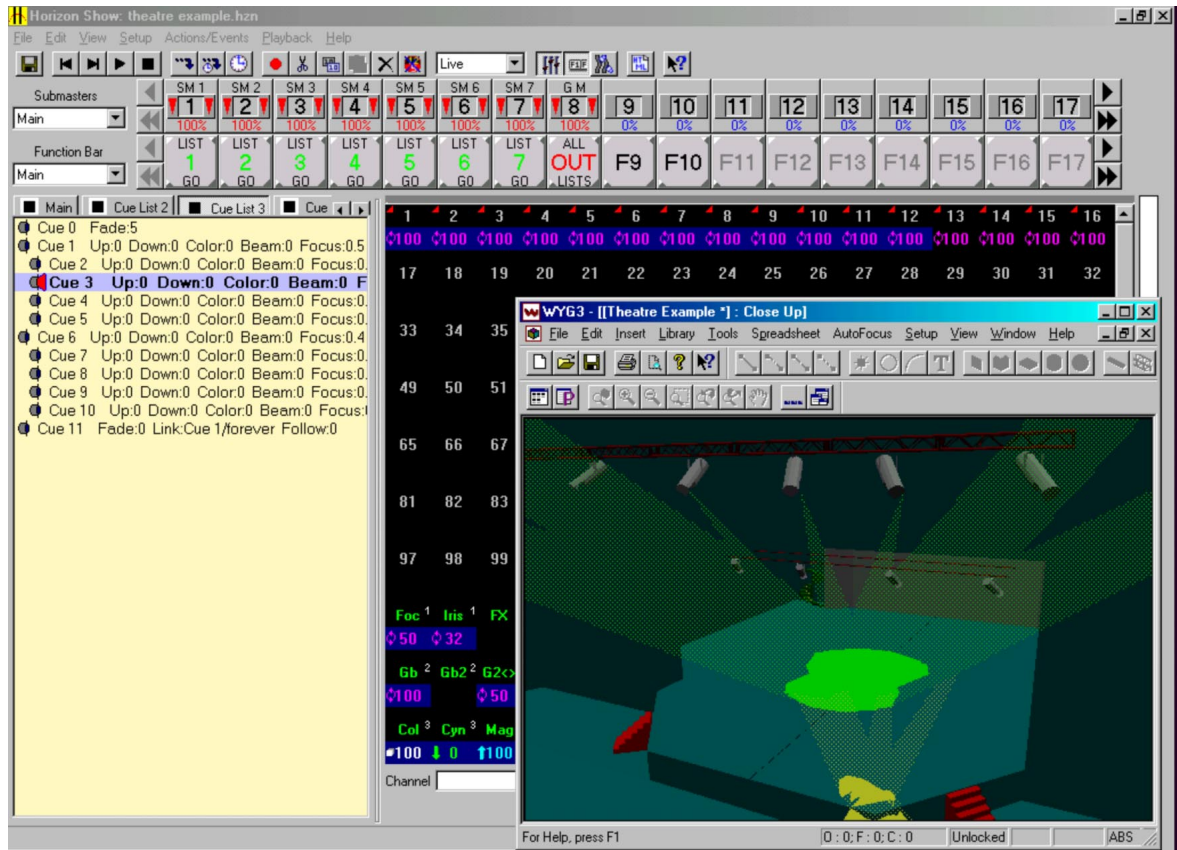




Build 680 - New Features



- ◆ Interface to WYSIWYG
 - HORIZON and WYSIWYG on one computer
 - WYSIWYG and WYSIWYG AutoFocus™
- ◆ Windows NT and Windows 2000 support
- ◆ Highest takes precedence between Cue Lists
- ◆ Selectable Action on GO within Cue Loop
 - Goto Cue 0
 - Stop at End of Loop
 - Skip to Next Cue After Loop
 - Exit to Next Cue After Loop
 - Restart Loop
- ◆ New Submaster types
 - Inhibit minus Sub
 - Inhibit Selected Channels on Cue List
 - Inhibit All Channels on Cue List
 - Inhibit All Channels
- ◆ More Submasters and Function Keys per page
- ◆ All Submasters active all the time
- ◆ Effects and Chases
- ◆ Copy moving light attributes
- ◆ Rate
 - For a Cue
 - For a Cue List
 - For the entire show
- ◆ Macro editor
- ◆ Execute Remote Macro Commands
 - Serial Port
 - Telnet over LAN or Internet
 - HORIZON Button Stations
 - Remote Closures
 - MIDI Commands
 - MIDI Show Control
 - SMPTE
 - Internal Astronomical Time Clock
- ◆ Import from other HORIZON Shows