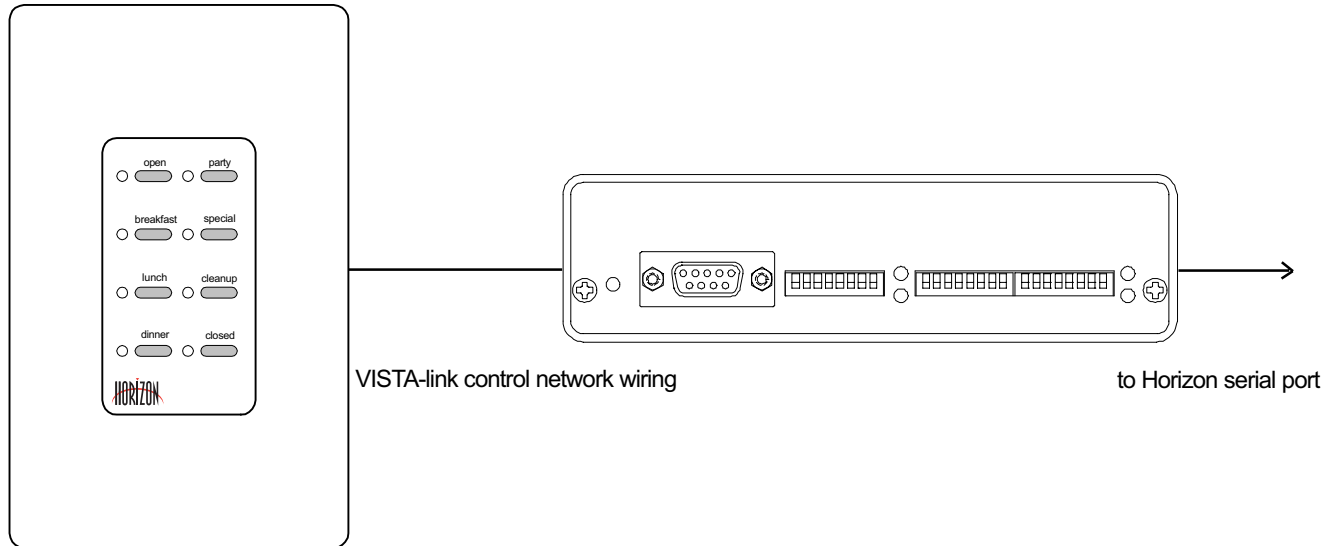




# Button Station Interface



## IPS-HZ-BUTTON

The HORIZON Button Station Interface allows the user to program VISTA-style button stations to execute HORIZON console functions.

The IPS-HZ-BUTTON plugs into the serial port of either the HORIZON 1024 Ethernet Node, the HORIZON Playback Controller, or the HORIZON PC. It provides power and control for up to fifty 8, 16, or 32-button stations. Stations are connected by a 4-wire topology-free network (VISTA-link). Each button on each station may be programmed to perform any of the HORIZON functions shown at right. HORIZON button stations do more than recall static preset looks - they can activate chases, run moving lights, or start sequences. With HORIZON's extensive Macro language, you can program a button to do almost anything.

HORIZON Button Stations fit in one, two, or three gang standard backboxes, and have 8, 16, or 32 buttons. The faceplates incorporate Lexan overlays, making custom colors or custom labeling easy.

HORIZON Button Stations are perfect for restaurants, themed environments, or theatres - wherever you want to activate console or Playback Controller functions without trekking to the control room.

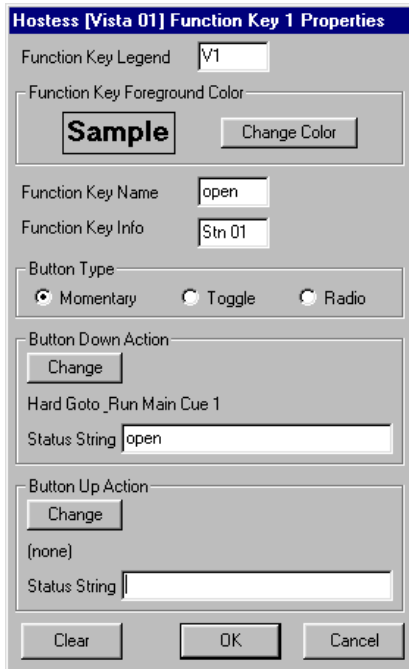
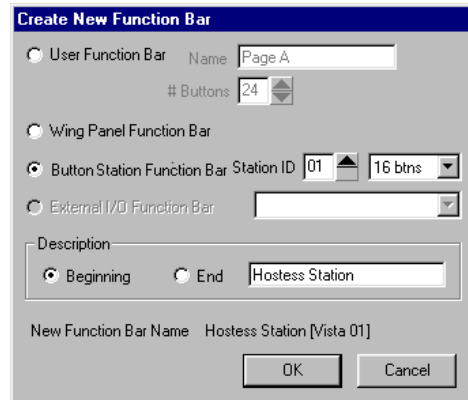
## Functions Available

- ◆ Recall Macros
- ◆ Execute Cue Sheet functions - Go, Halt, Goto and Run, Goto Cue, Hard Goto and Run, Hard Goto Cue, Global Pause On/Off
- ◆ Execute Submaster functions - Fade Sub, Bump begin, Bump end, Previous Sub page, Next Sub page
- ◆ Change Dimmer profiles
- ◆ Activate any Horizon Function Key
- ◆ Trigger external events

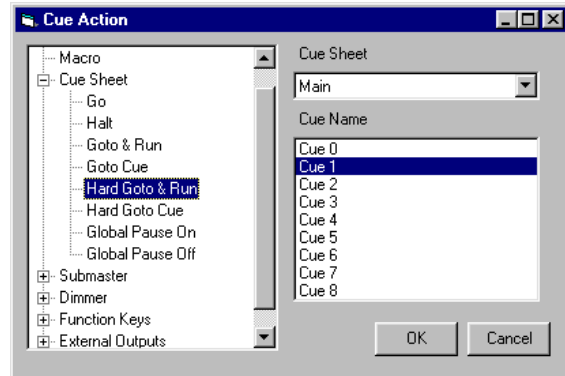


**Application**

Pull down the “Setup” menu and select “Function Bar”, “New”. Choose “Button Station Function Bar”, select the number of buttons, and add a station description.



From the Channel display, right-click on the function button you want to program. Name your button, decide what type of button it is, and choose a “Button Down Action” by clicking the “change” button (add a “Button Up Action” for toggle type buttons). Use the “Status String” text box to enter messages that will appear on the LCD screen of your Horizon Playback Controller (if used) when this button is activated.



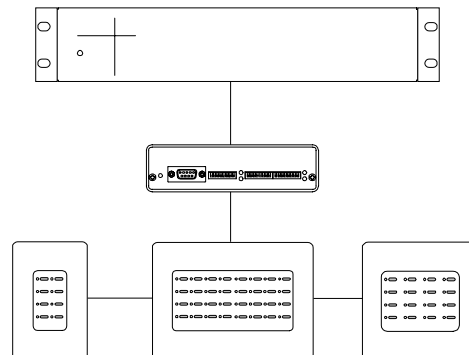
Choose your “Button Down Action” and “Button Up Action” here. You can activate a Macro, run a cue, activate a Submaster, change a dimmer property, activate a Function Key, or activate external outputs.

**Order Checklist**

<b>IPS-HZ-BUTTON</b>	HORIZON Button Station Interface
<b>IPS-HB-08</b>	HORIZON Button Station - 8 buttons
<b>IPS-HB-16</b>	HORIZON Button Station - 16 buttons
<b>IPS-HB-32</b>	HORIZON Button Station - 32 buttons

**Wiring**

HORIZON Button Stations use the same topology-free network (VISTA-link) as VISTA architectural stations. The HORIZON Button Station Interface uses a standard serial cable to plug into your control device.



**Home Office:** 2181 NW Front Ave. • Portland, OR 97209 • USA • (800) 223-9477 • (503) 222-9944 • Fax (503) 227-1562  
**Canada:** 1241 Dension St. #44 • Markham, Ontario L3R 4B4 • Canada • (888) ROSCO TO • (905) 475-1400 • Fax (905) 475-3351  
**South America:** Rua Antonio De Barros, 827 • São Paulo SP • Brasil CEP 03401-000 • (011) 218-2865 • Fax (011) 218-0193  
**Europe:** Blanchard Works • Kangley Bridge Road • Sydenham, London SE26 5AQ • England • (181) 659-2300 • Fax (181) 659-3153  
**Australia:** 42 Sawyer Lane • Artarmon 2064 New South Wales • Australia • (02) 9906-6262 • Fax (02) 9906-3430  
**Home Page:** www.rosco-et.com • **Email:** sales@rosco-et.com  
 Copyright 1999. Specifications subject to change. Revised 9/99. (Y08-2026-A)